

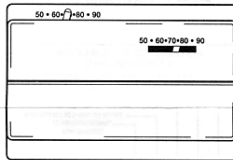
# INSTALLATION INSTRUCTIONS FOR



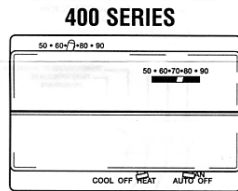
## 200 & 400 SERIES

### VERSATILE DELUXE LOW VOLTAGE THERMOSTAT

43356 Rev A



200 SERIES



400 SERIES

#### SPECIFICATIONS

24 Volt A.C.  
Electrical Rating: 24 to 30 Volts A.C.

Heat Anticipator: 0.20 to 1.2 Amp. Max.  
Cold Anticipator: 0 to 1.0 Amp. Max.

#### SELECTING THERMOSTAT LOCATION

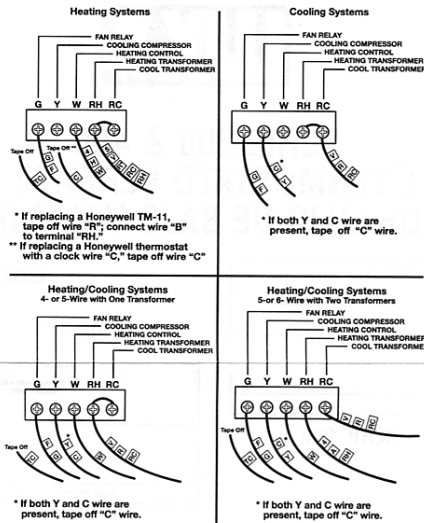
The proper location of the room thermostat is most important to insure that it will provide a comfortable home temperature. Observe the following general rules when selecting a location:

1. Locate it about 5 ft. above the floor with a free flow of air.
2. Install it on a partitioning wall, not on an outside wall.
3. Never expose it to direct light or radiation from lamps, sun, fireplaces, etc.
4. Avoid locations close to doors that lead outside, windows, or adjoining outside walls.
5. Avoid locations close to radiators, warm air registers, or in the direct path of heat from them.
6. Make sure there are no pipes or duct work in that part of the wall chosen for the thermostat location.
7. Never locate it in a room that is warmer or cooler than the rest of the home such as kitchen or hallway or on the opposite side of the wall of a cold or unused room.
8. The living or dining room is normally a good location, provided there is no cooking range or refrigerator on opposite side of wall.

#### INSTALLATION

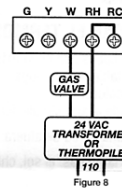
1. Remove cover from thermostat by pulling outward. Pull thermostat wires through small holes beside terminal screws on thermostat base and connect wires to proper terminal screws per wiring diagrams. Note that on some models wire leads may be connected to terminal screws on back of base.
2. The thermostat can either be mounted to a standard horizontal outlet box or mounted directly to the wall. The thermostat must be level to assure optimum performance. Place level on top of thermostat base and mark hole locations for mounting screws. Push excess wire into wall or switch box and plug up hole to prevent drafts from affecting thermostat operation. Then attach thermostat base loosely to wall with the two screws provided.
3. Again place level on top of thermostat base to be sure it is level. Then tighten mounting screws securely and snap on thermostat cover.

## WIRING DIAGRAMS

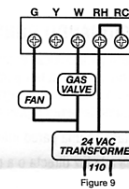


These diagrams below are provided for new installations or unreferenced wires.

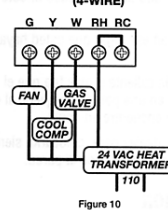
TYPICAL HOOKUP FOR 2-WIRE 24V HEATING SYSTEM AND MILLIVOLT SYSTEM



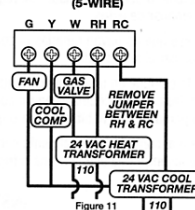
TYPICAL HOOKUP FOR 3-WIRE HEAT SYSTEM IF THIRD WIRE IS FAN WIRE



TYPICAL COOLING AND HEATING SYSTEM (4-WIRE)



TYPICAL COOLING AND HEATING SYSTEM (5-WIRE)



#### NOTE

If you have an electric system and the blower does not operate after installation, find the factory installed yellow wire currently attached to the "Y" terminal and move it to the "A" terminal on the sub-base.

#### TECHNICAL SERVICE

Technical Service is available through our Technical Service number. If you require assistance, please call our offices between 8:00 a.m. and 4:30 p.m. Eastern Standard Time, Monday through Friday. The number is (856) 234-8803.

## HEATING ANTICIPATOR

### WARNING

The Adjustable Heater (Heat Anticipator) WILL BURN OUT if 25V are applied directly to thermostat by shorting out the gas valve or primary control during testing or by incorrect wiring.

The heating side of this thermostat is equipped with an adjustable heater. **Set heater indicator to match the current rating of the primary control.** The heater may be adjusted for current ratings from .2 to 1.2 Amp.

Additional adjustments, if necessary, may be made as follows:

**BURNER CYCLES TOO LONG** - Set adjustable heater to a slightly lower dial setting (1/2 division).

**BURNER CYCLES TOO SHORT** - Set adjustable heater to a slightly higher dial setting (1/2 division).



LUX PRODUCTS CORPORATION

Mt. Laurel, New Jersey 08054 USA

## WARRANTY

**Limited Warranty:** If this unit fails because of defects in materials or workmanship within one year of date of original purchase, Lux will, at its option, repair or replace it. This warranty does not cover damage by accident, misuse, or failure to follow installation instructions. Implied warranties are limited in duration to one year from date of original purchase. Some states do not allow limitations on how long an implied warranty lasts, so the above limitation may not apply to you. Please return malfunctioning or defective units to the participating retailer from which the purchase was made, along with proof of purchase. Please refer to Technical Service Section before returning thermostat.

Purchaser assumes all risks and liability for incidental and consequential damage resulting from installation and use of this unit. Some states do not allow the exclusion of incidental or consequential damages, so the above exclusion may not apply to you. This warranty gives you specific legal rights and you may also have other rights which vary from state to state. Applicable in U.S.A. only.

### PLEASE SAVE THESE INSTRUCTIONS FOR FUTURE REFERENCE

#### RECYCLING NOTICE



This product does not contain mercury. However, this product may replace a unit which contains mercury and should not be disposed of in the trash. Contact your local waste management authority for proper disposal instructions for mercury in a sealed glass tube. If you have any questions, please call (856) 234-8803

PLEASE SAVE THESE INSTRUCTIONS FOR FUTURE REFERENCE.