

Heating & Cooling Programmable Outlet Thermostat

5/2-day Programmable

Programmable • Non-Programmable

Product Highlights

- ✓ Programmable outlet thermostat allows control of window air conditioning units and portable space heaters.
- ✓ Temperature control adjustable.
- ✓ Plugs into normal 120 volt, 15 amp electrical outlet.
- ✓ ETL listed.



Product Features

- Designed for Window Air Conditioners and Portable Space Heaters - 120 Volt 15A Units
- Easy-to-Use Lux Speed Dial®
- 5/2 Programming - Weekdays and Weekends Can Be Programmed Differently
- Armchair Programmable
- Easy to Reprogram
- Separate Programs for Heating and Cooling
- Clean, Attractive Design
- Energy Star® Compliant
- ETL Approved
- Vertical Orientation
- Setting Range 45°F to 90°F (7°C to 32°C)
- F/C Selectable
- Temporary Temperature Override
- Manual Hold
- 12 Hour Clock Only
- User Temperature Calibration
- Adjustable Temperature Differential/Cycle Rate
- Mode Slide Switch
- Positive On/Off Switch
- 120VAC Outlet Powered
- 2 G13A Size 1.5V Alkaline Batteries Included (for clock only)
- Battery Free Memory Storage
- 5 Minute Compressor Delay
- Time and Temperature Alternate in Display
- On-Screen Low Battery Indicator
- Soft Touch Buttons

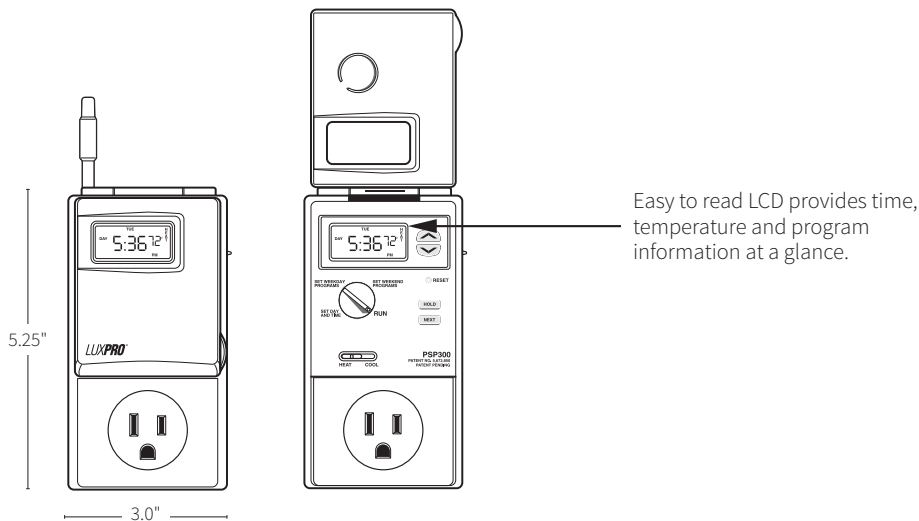
Installation

Compatible With

- All mechanically controlled: 120Volt, 15 Amp, 60 Hz, window air conditioning units and portable space heaters.
- It is also compatible with electronically controlled: 120Volt, 15 Amp, 60 Hz, window air conditioning units that have automatic restart of cooling after power resumption**.

Not Compatible With

- It cannot be used with electronically controlled space heaters, or window air conditioning units that do not have automatic restart of cooling after power resumption**.
- In addition, it cannot be used with conventional 24 Volt heating/cooling systems, hydronic systems, or heat pumps.



Dimensions	3.0" (76mm) wide x 5.25" (133mm) tall x 2.75" (70mm) deep Unit Total / 1.80" (48mm) depth - when plugged in.
Electrical Ratings	Unit is directly powered by the 120V outlet. (2) 1.5V G13 alkaline button cell batteries (included) are for maintaining the clock only.
Temperature Control Range	<ul style="list-style-type: none"> Temp control 45° F to 90° F (7° to 32° C) accuracy +/- 1° over a range of 45° F to 90° F.
Environmental Limits	<ul style="list-style-type: none"> Moisture and Dust: meets IP20 Operating Humidity: 20% to 90% (non-condensing) Operating temperature: 14°F to 122°F (-10°C to 50°C) Storage temperature: -4°F to 140°F (-20°C to 60°C) Electrical Immunity: meets relevant EMI/EMC specifications
Compatible With	<ul style="list-style-type: none"> All mechanically controlled: 120Volt, 15 Amp, 60 Hz, window air conditioning units and portable space heaters. It is also compatible with electronically controlled: 120Volt, 15 Amp, 60 Hz, window air conditioning units that have automatic restart of cooling after power resumption**.
Not Compatible With	<ul style="list-style-type: none"> It cannot be used with electronically controlled space heaters, or window air conditioning units that do not have automatic restart of cooling after power resumption**. In addition, it cannot be used with conventional 24 Volt heating/cooling systems, hydronic systems, or heat pumps.
Packaging	<ul style="list-style-type: none"> Master Carton: UPC:

**** NOTE:** Electronically controlled units can usually be identified by their digital readout. To learn whether a particular model offers automatic restart of cooling or heating after power resumption, refer to their manual or manufacturer.

Project Name _____

Date _____

Contractor / Engineer _____

Location _____